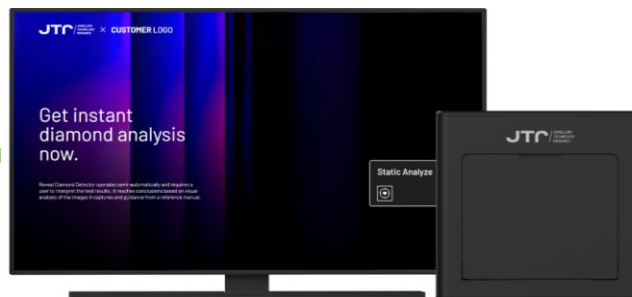




JTR Reveal



Overview

The JTR Reveal is a desktop diamond verification instrument for loose and mounted stones designed to separate natural diamonds from synthetic diamonds. The Reveal is manually operated and requires the user to interpret color images of the stones under fluorescence and phosphorescence. Images are displayed on a connected monitor (not included). The Reveal comes with large capacity trays for both loose stones and jewelry.

The JTR Reveal provides four views of the diamonds on the tray; i) Day light, ii) Fluorescence, iii) Phosphorescence, and iv) Result. The Result view will automatically identify some of the synthetic diamonds with a red dot. The remaining stones need to be visually interpreted by the operator based on the color characteristics of the stones under Fluorescence and Phosphorescence. An interpretation key with reference colors is shown on the monitor to assist with categorization of stones in one of following results:

- i) Diamond
- ii) Refer

When placing the stones on the tray, the culet was oriented in the up position. For jewelry testing, the stones were positioned at a common height above the tray in order to achieve the sharpest possible focus. The JTR Reveal has several analysis modes; the Detailed Analysis mode was used for all ASSURE testing.

Stone Testing Capabilities

Weight range:	All
Size of stones:	All
Colour range:	D-K
Stone shape:	All
Diamond simulants:	No
Mounted stones:	Yes

Instrument Capabilities

Automated feed:	No
Automated results:	Semi-automatic
Automated dispense:	No
Detect or Refer (synthetic diamonds):	Refer
Detect or Refer (diamond simulants):	N/A
Multiple stones at once:	Yes
Training required:	Yes

ASSURE 2.0 Performance



Key ASSURE 2.0 test results for JTR Reveal:

	Primary Loose	Smalls	Primary Mounted
Diamond False Positive Rate (Optimal rate 0%)	0.0% +/- 0%	0.0% +/- 0%	0.0%
Diamond Referral Rate (Optimal rate 0%)	10.5% +/- 1.7%	11.7% +/- 2.9%	7.4%
Diamond Accuracy Rate (Optimal rate 100%)	89.5% +/- 1.7%	88.3% +/- 2.9%	92.6%
Test Speed Stones per hour	371 +/- 35		

Notes:

Uncertainty ranges (+/-) are based on repeatability testing (three trials) and represent spread of results in absolute terms.
Test Speed based on time to screen the full Primary Loose sample set, and includes time taken to retest challenging stones at different angles.
See Laboratory Report for full set of performance results.

Instrument Specifications

	21 cm (W) x 24 cm (D) x 19 cm (H)
	5.0 kg

Price: 8,500 USD (February 2025)

Contact

website: jtr.org/equipment/reveal-diamond-detector
email: equipment@jtr.org

USA	+1 (917) 268-4747 (JTR New York Office)
Turkiye	+90 (850) 217 38 66 (JTR Istanbul Office)
UK	+44 (0)20 7404 5762 (Euro Findings)
China	+86 13585717282 (JTR Shenzhen Office)
India	+91 77770 55667 (Mehta Tools)

ASSURE Tested November 2024